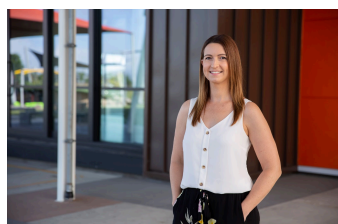




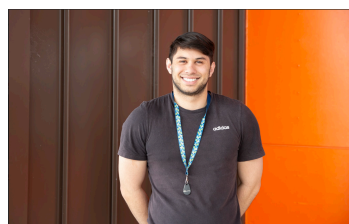
“Mā te huruhuru ka rere te manu” Creating opportunities for our learners to soar

Nau mai haere mai e te whānau o Kāhu Tahi
Welcome back to the Kāhu Tahi learning community

We are really looking forward to enjoying another amazing term in Kāhu Tahi. Once again, there will be many new learning opportunities and we can't wait to explore these with your tamariki. Hui-a-Whānau is in Week 3 and we are excited to meet you all and celebrate the progressions and achievements of your tamariki so far this year.



Alana Cramond
Classroom Teacher



Teina Neha
Classroom Teacher
(Mon-Thurs)



Yana Tomich
Classroom Teacher
(Fri)



Jess Newman
Support Teacher (AM)
Literacy and Numeracy



Andrea Hollebon
Learning Assistant -
Literacy



Lucy Pedler
Learning Assistant -
Numeracy



Rainy Lee
Inclusive Learning
Assistant



Shannon Millard
Inclusive Learning
Assistant

Useful Information

When does Term 2 officially start?

- Term 2 start date: 29 April 2024
- Term 2 end date: 5 July 2024
- Tamariki are welcome to arrive at school from 8am, with learning spaces opening from 8:20 am onwards

What does your child need to bring to school each day?

- They will need a lunch box packed with a snack, morning tea and lunch
- A water bottle
- As we approach the winter months, please ensure your child wears warm clothes and layers to school. It gets very cold in the mornings before school and during break times when the children play outside.

Exciting events coming up

- TOPA (Talents of the Pacific) 6 week in class programme
- Food for Thought in Week 2 - learning about Nutrition
- TAM Has Talent performance in Week 6
- Matariki Night Window Walk in Week 9
- Matariki and King's Birthday Holidays

Focus for this term

Our main focus will be around a story called, 'The Wheel that Jack Built'.

Social Science: Culture and Identity- how communities and societies function.

Technology: Technological Knowledge - how and why things work



Communication

- Your child has a whānau teacher and this is your first point of contact
- Feel free to come in and chat to the Kāhu Tahi community if you have any queries or just want to say 'hello'
- Our website and facebook page have useful information for you. Please head to www.teaomarama.school.nz . Click the lines on the top right hand side for a drop down menu and choose the appropriate tab.

Hero

- The school communicates important messages and updates on your child's learning through the Hero app. Download the Hero app to receive updates. You will also be notified via email where you can follow links to view posts and updates on the Hero website



TERM 2 - 2024



Date	What's On
Monday 29 April	First Day of Term 2 - Pōwhiri welcome for new families
6 - 10 May	New Zealand Sign Language Week
15 & 16 May	Hui-ā-whānau (Student/Parent/Teacher meetings)
13 - 17 May	Pink Week (Anti-Bullying Week)
Friday 17 May	Pink Shirt Day / Wā Ngākau
Fri 31 May	Staff-Only Day - SCHOOL CLOSED <i>Community of Learning (all local schools closed)</i>
Mon 3 June	King's Birthday Public Holiday - SCHOOL CLOSED
Fri 7 June	TAM Has Talent
Fri 28 June	Matariki Public Holiday - SCHOOL CLOSED
Fri 5th July	Last Day of Term 2

We look forward to continuing to share your child's learning journey with you this term. Please feel free to contact us with any further questions or ideas to support your child at Te Ao Mārama School.

alana@teaomarama.school.nz

teina@teaomarama.school.nz

yana@teaomarama.school.nz

Ngā mihi mahana
Alana, Teina and Yana