



 TERM 2 UPCOMING EVENTS	
Date	What's On
Mon 28 April	First Day of Term 2 - Pōwhiri welcome for new families
Thurs 8 May	New Parent Evening
13 & 14 May	Hui-a-whānau (Student/Parent/Teacher meetings)
Fri 16 May	Pink Shirt Day
Thurs 29 May	Te Ao Mārama Has Talent Finals
Fri 30 May	Staff Only Day - SCHOOL CLOSED Community of Learning (all local schools closed)
Mon 2 June	King's Birthday Public Holiday - SCHOOL CLOSED
2 - 6 June	Samoa Language Week - Vaiaaso o le Gagana Samoa
Fri 20 June	Matariki Public Holiday - SCHOOL CLOSED
Fri 27th June	Last Day of Term 2

REMINDERS



- **Food:** Please ensure your child is sent to school with enough food for snack, morning tea and lunch.
- **Devices:** We have noticed an increase in children forgetting to bring or charge devices. Please support your children with ensuring they are prepared for the day.
- **Lateness:** Being on time to school is very important. If your child is late they may miss important notices and instructions for the day. School starts at 8.40am.
- **Emails:** If you have emailed your child's whānau teacher please allow time for us to respond (at least 24 hours). We cannot always check emails during the day as we are teaching.
- **Learning:** We will be continuing our maths and literacy programmes into term 2. **Please encourage your child to bring a suitable chapter book to school with them for independent reading.**

MARKET DAY



This term a big focus for us will be Market Day. The students will research, plan and create a product/activity and these will be presented to the school community on a selected day in Term 2. This activity is fun, challenging and a great way to learn about entrepreneurship. We will send further information on Hero when appropriate.

WEATHER

With the temperature dropping we recommend that your child dresses in layers. This allows them to be warm enough outside, while also being comfortable inside (where it is much warmer).



HUI-A-WHĀNAU

Hui-a-whānau will be coming up in Term 2. Bookings are made through HERO. Please let us know if you have trouble booking!

Hui-a-whānau is a wonderful opportunity to speak with your child's whānau teacher about their learning and progress so far this year.

It would be great to connect with all of our Kāhu families during these hui (meetings).

KĀHU TAHI

Reece Conrad



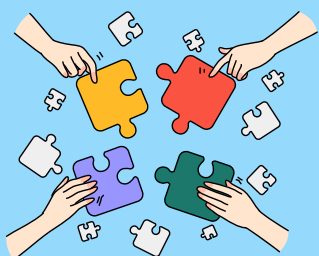
reece@teaomarama.school.nz

Nikki Arnold



nikki@teaomarama.school.nz

OUR TEAM



KĀHU RUA

Jacqui Murphy-Curtis



jacqui@teaomarama.school.nz

Kasey Young



kasey@teaomarama.school.nz

Alana Cramond



alana@teaomarama.school.nz