

PŪKEKO RUA TERM 2 2026



Nau mai haere mai ki te akomanga Pūkeko Rua!

We hope you all had a restful and relaxing holiday break. We are looking forward to an exciting term of learning and growing. Please find below a few friendly reminders and helpful information for this term.

What do I do if I have a Question?

Email your child's whānau teacher, talk to one of us before or after school or arrange a time to meet.

How do I know about my child's learning?

We communicate this face-to-face and via Hero where you will be able to view your child's learning stories. For other events, keep up-to-date via our Facebook page, and website.

Self-managing - On arrival to school:

We encourage children to self-manage their belongings. This includes hanging up their bag on the hooks outside the classroom, bringing their drink bottle inside and placing their book bags in the buckets provided.

REMIINDER: Book bags MUST be brought to school everyday.

Attendance Management Plan
The Stepped Attendance Response (STAR)

We want to ensure all tamariki at Te Ao Mārama attend regularly, supporting their right to access education and reach their full potential.

Our school has a target of 80+% of our students attending regularly (90% or higher) each term.

Our goal aligns with the government's national target: 80% of students attend more than 90% of the time by 2030. This means that tamariki should be absent for no more than one day a fortnight to ensure that they can have continued success at school.

Parents have legal obligations to ensure their children attend school (Education and Training Act, s244).

We expect parents to notify the school as soon as possible if their child is going to be late or absent, arrange appointments or trips outside of school hours or during school holidays where possible, work with us to manage attendance concerns.

The Stepped Attendance Response (STAR) sets expectations for school, student, parent/guardian, Ministry of Education and broader system responses to student absence. The STAR also outlines actions at various absence thresholds. This plan outlines our proactive and responsive strategies to improve and sustain student attendance.

Roles and Responsibilities

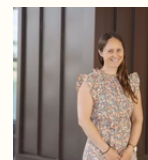
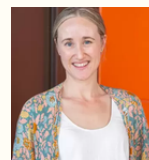
Parent/Guardian	Student	Teacher	Ministry of Education
<ul style="list-style-type: none"> Notify the school as soon as possible if their child is going to be late or absent. Arrange appointments or trips outside of school hours or during school holidays where possible. Work with the school to manage attendance concerns. 	<ul style="list-style-type: none"> Attend school regularly. Follow school rules and expectations. Notify the school if they are unable to attend. 	<ul style="list-style-type: none"> Monitor student attendance. Communicate with parents/guardians about attendance concerns. Implement the STAR process. 	<ul style="list-style-type: none"> Provide support and resources for schools. Monitor national attendance trends.

Our school day:

A friendly reminder that our school day starts at **8.40am** and finishes at **2.30pm**. An ideal time to arrive is between **8.20am and 8.30am**. If you arrive after 8.40am please sign in at the office. Whānau time is a really important part of our school day and it helps to have your child at school on time to be part of whānau time. This helps them settle into their learning for the day and be emotionally regulated. Your help with this is much appreciated.

Our amazing CRT team

This term, we will be released from the classroom on Thursday's week 2, 4, 6, 8, 10 and Monday of week 11. During this time, our amazing CRT team will be in teaching our tamariki some incredible things! The children really look forward to these days.



Above are some reminders and information about our STAR attendance response. We look forward to seeing the wonderful attendance across Pūkeko Rua in term two!



Term 2	
Date	What's On
Mon 20 April	First Day of Term 2 - Pōwhiri welcome for new families
Mon 27th April	Anzac Day observed / SCHOOL CLOSED
5th & 6th May	Hui-ā-whānau (Student/Parent/Teacher meetings)
Fri 8th May	Te Ao Mārama Has Talent Finals
11th May	Speak Up Friend Show - Yr3-6
Fri 15 May	Pink Shirt Day (Kindness/anti-bullying) / Wā Ngākau (Assembly)
Fri 29th May	Staff Only Day - SCHOOL CLOSED
Mon 1st June	King's Birthday Public Holiday - SCHOOL CLOSED
Fri 3rd July	Last Day of Term 2 / Wā Ngākau (Assembly)

Hui-ā-Whānau

On the **5th and 6th of May**, you will have the opportunity to book in for our hui-ā-whānau. This is a wonderful opportunity to talk to your child's whānau teacher about their learning and progress this year. This is a great time to connect with all our Pūkeko Rua whanāu and celebrate learning.

Getting in touch

As always, if you need to get in contact with your child's whānau teacher, please send us an email

olivia@teaomarama.school.nz

linda@teaomarama.school.nz

nikkim@teaomarama.school.nz