

Nau mai, Haere mai ki Wahanga Tuatahi
Welcome to Term 1, 2026!



WHAEA SHANNON



WHAEA SARAH

Kia ora e te whānau,
Welcome to Term 1! We are super excited to be teaching
your tamariki this year! We hope you have all enjoyed a
lovely, restful break. Please have a thorough read of our
newsletter to hear about what's coming up, our important
reminders this year and for some dates to diary!

Ngā mihi, 😊
Sarah & Shannon



*"Ko te manu e kai ana i te miro nōnā te ngahere.
ko te manu e kai ana i te mātauranga nōnā te ao."*

The bird that eats the Miro berry owns the forest, the bird that feasts on
knowledge owns the world.

Your 2026 Kaiako



WHAEA SHANNON

Kia ora whānau,

Ko Shannon tōku ingoa, and I'm originally from Tokoroa. I've been part of Te Ao Mārama School since shortly after it opened, working as a learning assistant. I've recently completed my Bachelor of Teaching and am excited to begin my first year teaching this class.

Outside of school, I enjoy playing golf, listening to music, and spending time with my whānau. I'm also a parent to three children aged 12, 18, and 20, which gives me a strong appreciation for the important role families play in learning. I look forward to getting to know your tamariki and working alongside you throughout the year.

Ngā mihi,
Shannon



WHAEA SARAH

Kia ora e te whānau!

Ko Sarah Corkill tōku ingoa.

I grew up in Kerikeri in the beautiful Bay of Islands. I enjoy swimming, running, water sports, dancing, traveling, being at the beach and spending time with family and friends. I have three children (two at Te Ao Mārama) and my husband Andrew is on the Board of Trustees.

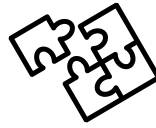
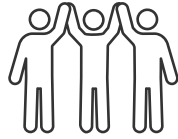
It is such a privilege to teach at our wonderful school, Te Ao Mārama, and even more so to have been a foundation member here. I have been teaching for 17 years across all age groups and love what I do. I am especially passionate about learning te reo māori and love to learn alongside the tamariki.

I look forward to meeting you / seeing you again soon!
Sarah



SUPPORT TEAM

Our Support Team



WHAEA LOU

Whaea Lou will be in Tūi Rua every second Monday to provide Shannon with release time being that she is a new kaiako. She will also be in every Friday for Sarah who looks after her 4yo on this day.



WHAEA DANIELLE

Whaea Danielle will be working in Tūi Rua every second Thursday with the Arts Team (doing fun art, drama, music, science etc).



WHAEA KYLA

Whaea Kyla will be working in Tūi Rua every second Thursday with the Arts Team (doing fun art, drama, music, science etc).



WHAEA HAYLEY

Whaea Hayley will be working as Literacy and Numeracy Support in our space.



WHAEA LUCY

Whaea Lucy will be working as Literacy and Numeracy Support in our space.



WHAEA BUFFY

Whaea Buffy will be working in our space each week supporting our children's learning of te reo māori.

OUR LEARNING

Term 1 Focuses



Feathers in the Wind

This term, our main overarching inquiry focus will be based around a story called, 'Feathers in the Wind'. This is a traditional story about the importance of being kind and thoughtful with our words and actions. The story uses the analogy of feathers blowing away in the wind to show how words can be spread and the ripple effect of our actions. It reminds us to think carefully before acting and to always try and be our very best.

Inquiry – Pākiki (Topic Time)

Pākiki means 'to be curious or to inquire' and this is the name of our topic learning time in Tūi Rua. Pākiki covers learning areas such as Technology, Science and Social Science. Pākiki time empowers our students to manage their learning and fosters independence and self and time-management skills. You'll get used to hearing about Pākiki as we find students LOVE this time and making connections to the real world.

Below are some of the areas we are exploring in Term 1:

Science: We will explore physical phenomena such as weather, forces and motion, gravity and the principles of flight.

PE & Health: For PE, we will practice ball skills like throwing, catching and batting. For Health, we will explore qualities like approaching and joining in with others, how to include others, playing fairly, being good winners and being gracious at losing.

Literacy: Our Reading and Writing will tie in with our topic and Term 1 theme.

Maths: We begin the year with Place Value, Number Knowledge, Add/Sub Strategies as well as the strand area of Statistics.

Book Bags



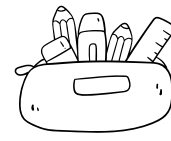
Please ensure that your child **brings their book bag to school every day**. Literacy Workshops are happening each day, Monday to Thursday. Without a book bag, your child will not be able to take books home. **All readers will be collected on Fridays** and all book bags will be stored at school over the weekends. We will store book bags at school until we begin to use these (start approx Week 3).

HELPFUL INFO!

Role of the Whānau Teacher



Your child has been placed within a Whānau Group for 2026. They will start each day with this kaiako and **this teacher is your main point of contact**. Please feel free to pop in and say hi before or after school but if you have any further queries that require more time, please book in a time with us. 😊



Stationery

To make this easy for you, we have teamed up with OfficeMax MySchool to have our stationery requirement lists loaded onto myschool.co.nz. Once on the OfficeMax site, select our school, click 'start' on view the Requirements List, select your child's class and follow the instructions on the website.

Find: Tūi Rua – Sarah C & Shannon – Choose your child's Whānau Teacher.

NOTE: PLEASE NAME ALL OF YOUR CHILD'S STATIONERY INCLUDING EVERY INDIVIDUAL PEN, PENCIL, COLOURING PENCIL AND HIGHLIGHTER 😊

Your child will be individually responsible for their own stationery this year, which will be kept in a **pencil case** in their tote tray.

Please send in ALL of their spare stationery to school as we put these into bags and hold onto them so we can top your children's stationery up when needed throughout the year. It is really helpful to have it on hand! Please ensure you purchase all the spare books and equipment as it saves your child running out midway through a lesson.

When our children arrive at school, we encourage them to check their pencil case and sharpen any pencils if needed. This maximises use of learning time.

Attendance



Just a reminder that children are welcome onsite in the morning from 8am – however this is unsupervised. They may wait outside the classroom and at 8.20am they are welcome inside. **School starts at 8.40am – please be here on time.** School finishes at 2.30pm and pick up needs to be prompt. Please give your child a clear plan or meeting point and encourage them to stay off the playground if they are unsupervised for their own safety. Ngā mihi 😊

HELPFUL INFO!

BYOD – Bring Your Own Devices / Ngā Rorohiko



Excitingly, Tūī Rua is a B.Y.O.D. (Bring Your Own Device) learning community. The use of technology is vital in our ever evolving world and we want to prepare our students with the technical skills they will need. The use of devices will be a daily part of our learning community and programme. If you are able to supply your child with a personal device (laptop, chromebook, iPad), we would really appreciate it. Chromebooks are particularly user-friendly. These devices will come to school and return home each day. We ask that chargers are left at home and that students charge their devices each night before bringing them to school. Please label your child's device with their first and last name clearly. B.Y.O.D. is optional (but recommended). Please speak to us if a device for your child isn't going to be possible as we have some school devices we can support you with, but this is limited.

A User Agreement and BYOD agreement will be coming home with your child in the first couple of weeks, so look out for those. Read these together, sign and return ASAP. Your child will only be able to use a device once these are in.

We will also spend time in class creating clear expectations around safe use of devices and the internet. We also ask that if your child is bringing a device, that they start bringing these to school from Week 3: Monday.

Please ensure that if your child is using their device at home for play, that they are not using their school account. This is for their learning only.

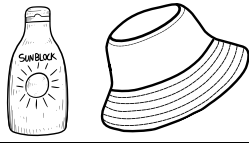


Home Learning

Our school does not set formal homework each week but we will share some ideas for how you can help at home when and if you want to. These will be shared later this term via Google Classroom – keep an eye out. Once Guided Reading is up and running, your child will start to bring home readers too (or sometimes a printed text on paper). Readers **MUST** go home in a book bag. No book bag, no reader. We ask that your child's book bag comes to school daily so readers can be read both at home and school. Once it is up and running, feel free to view the learning your child is doing in class via Google Classroom. This work is for your child to complete in class time but you can get a really up to date insight into what your child is learning on this platform. Regular viewing of set work could be used to reinforce learning at home too.

HELPFUL INFO!

Sun Safety



In Terms 1 and 4, all children **MUST wear a hat** outside. Please ensure your child has a named hat in their bag every day. A spare hat could also be kept at school in their personal tote tray. We have a supply of sunblock in Tūī Rua but ask that children please come to school with this already applied. If they are finding it very hot at break times, encourage them to seek shade to play in.



What to Bring to School

Please Bring Every Day:

- A lunch box packed with a healthy snack (fruits and vegetables are ideal), morning tea AND lunch – plenty of food to fuel you! (Please leave lollies at home).
- A water bottle
- Appropriate clothing – a hat and a spare change of clothes
- A book bag (every day!)
- A big smile and positive attitude! 😊

Please ensure all toys and valuables are kept at home.

Birthdays



Encourage your child to share that it is their birthday with us as we love to celebrate them! We do already have a birthday ritual in place so that your child has the opportunity to have their moment and be celebrated. Therefore, **please refrain from bringing in any lollies or treats to share**. We have food allergies in our class and need to keep our tamariki safe. Thanks for your understanding.

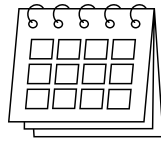


Staying Up-To-Date

For further information about our school and to keep up-to-date, please see our Facebook page or visit www.teaomarama.school.nz

WHAT'S ON?

Looking Ahead:

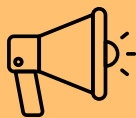


Term 1 Dates



Date	What's On
27 January	Class Placements for 2026 advised to families <i>(via email)</i>
28 January	School Tour - <i>new families for 2026 - 9am</i>
30 January	Meet the Teacher drop-in sessions (12.30-2.30pm)
2 February	First day - Term 1 Begins
2 February	Pōwhiri to welcome new families/students - 9.00am
6 February	Waitangi Day (Public Holiday - school closed)
11 February	Hui-ā-whānau (Parent - Teacher information meetings)
9-11th March	Haerenga ki Hukanui Marae (Hukanui Marae Visits)
2 April	Last Day of Term 1

Stay in Touch :



Shannon Millard
shannon@teaomarama.school.nz



Sarah Corkill
sarah@teaomarama.school.nz



Te Ao Mārama
(07) 595 0595

"He aha te mea nui o te ao?
What is the most important
thing in the world?
He tangata. he tangata. he
tangata."

It is the people,
it is the people,
it is the people.

Maori Proverb

