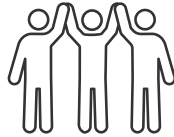


Nau mai, Haere mai ki Wahanga Tuarua
Welcome to Term 3 2025!



WHAEA SARAH
(Sarah S/Hera)



MATUA ANANIAH



WHAEA SARAH
(Sarah C)

Kia ora e te whānau,
Welcome to Term 3! We hope you enjoyed a lovely break!

Please have a thorough read of our newsletter to hear about what's coming up,
important reminders and for some dates to diary!

Ngā mihi 😊

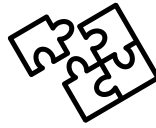
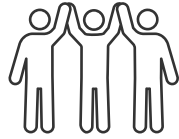


*"Ko te manu e kai ana i te miro nōnā te ngahere.
ko te manu e kai ana i te mātauranga nōnā te ao."*

The bird that eats the Miro berry owns the forest, the bird that feasts on
knowledge owns the world.

SUPPORT TEAM

Our Support Team



WHAEA LOU

Whaea Lou will be in Tūi Rua every Friday for Whaea Sarah Corkill (as Sarah looks after her 3-year old on this day).



WHAEA LEILA

Whaea Leila will be working in Tūi Rua every Thursday to release Matua Ananiah.



WHAEA SANDRA

Whaea Sandra will be in Tūi Rua every Wednesday supporting Matua Ananiah.



WHAEA HAYLEY

Whaea Hayley will be working as Literacy & Numeracy Support in our space.



WHAEA LUCY

Whaea Lucy will be working as Literacy and Numeracy Support in our space.

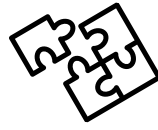
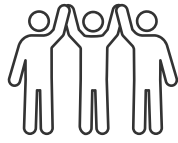


WHAEA BUFFY

Whaea Buffy will be working in our space as a Kaiārahi i te reo Māori, supporting Matua Ananiah.

ADDITIONAL KAIAKO

Student Teachers



This term, we are fortunate to have two student teachers joining us from Week 3 to Week 10. They are both in their third year and have already made connections with our students. Whaea Leila is a regular teacher in Matua Ananiah's space every Thursday and she will be continuing this role but she will spend the rest of the week working alongside Whaea Hera. Matua Caleb will be working alongside Whaea Sarah and is familiar to some of the students already as he is a Swimming Instructor as well. Both of these kaiako are fantastic at building relationships with students and have much to offer our space. Feel free to introduce yourself and say hi if you see them around school!



WHAEA LEILA

Ko Leila McLean tōku ingoa. I'm currently in my final semester of study toward a Bachelor of Education (Primary) at Te Wānanga o Aotearoa. My journey into teaching is deeply rooted in my love for tamariki, learning, and uplifting others through meaningful relationships. As a passionate speaker of te reo Māori me ōna tikanga, I bring my culture into everything I do—whether it's through kapa haka, mahi toi, or sharing pūrākau that connect us to our whakapapa.

Guided by the core values of whanaungatanga, ako, kaitiakitanga and aroha, I strive to create inclusive, culturally responsive environments where tamariki feel empowered, valued, and supported in their learning journeys. Outside the classroom, I'm a busy māmā who thrives on whānau time, travelling, and outdoor adventures. These experiences fuel my creative energy and keep my wairua grounded. I am driven to inspire tamariki through meaningful connections, authentic learning, and a strong sense of identity and belonging.



MATUA CALEB

Kia ora! I'm Caleb Parsons, a Primary Teaching student at Waikato University. I'm passionate about helping kids learn in ways that feel natural, engaging, and practical

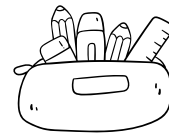
— not just ticking boxes. I believe the best learning happens when students feel comfortable, understood, and genuinely interested in what they're doing. I'm especially into anything active — golf, casual sports with mates, or getting outside whenever I can. I enjoy finding simple, effective ways to make things work, whether that's in the classroom or everyday life. On weekends, you'll usually find me out exploring, spending time with friends, or taking a well-earned break. I'm pretty easygoing, but I care about doing things properly and putting in the effort when it counts. For me, teaching is about being real, building trust, and showing up in a way that actually makes a difference.

HELPFUL INFO!

Role of the Whānau Teacher



Your child has been placed within a Whānau Group for 2025. They will start each day with this kaiako and **this teacher is your main point of contact**. Please feel free to pop in and say hi before or after school but if you have any further queries that require more time, please book in a time with us. 😊



Stationery

When our children arrive at school, we encourage them to check their pencil case and sharpen any pencils if needed. This maximises use of learning time. We keep hold of the spare stationery that your child brought into school at the start of the year and can replace anything if they have lost something. However, if they have lost something they only have one of (e.g. Sharpie), broken their ruler or have lost both their erasers, they will need a replacement please. **Please ask your child to check and let you know if they need anything so that you can purchase and get organised over the holidays.**

Book Bags



Please ensure that your child is **bringing their book bag to school every day**. Literacy Workshops are happening each day, Monday to Thursday. Without a book bag, your child will not be able to take books home. **All readers will be collected on Fridays** and all book bags will be stored at school over the weekends.



Attendance

Just a reminder that children are welcome onsite in the morning from 8am - however this is unsupervised. They may wait outside the classroom and at 8.20am they are welcome inside. **School starts at 8.40am - please be here on time.** School finishes at 2.30pm and pick up needs to be prompt. Please give your child a clear plan or meeting point and encourage them to stay off the playground if they are unsupervised for their own safety.

HELPFUL INFO!

Cooler Weather & Winter Illnesses



A friendly reminder to **please keep illnesses at home, regardless of the day's events**, if your child is too unwell for school, they need to remain at home until they are better. We are trying to limit the spread of bugs. Please ensure your child has appropriate clothing to keep warm. Umbrellas are fine if they are using them to walk to/from school but they aren't to be used at break times and need to be stored by their bags for the day. A good idea is to keep a spare change of clothing/spare jumper in your child's bag in case they need it.



What to Bring to School

Please Bring Every Day:

- A lunch box packed with a healthy snack (fruits and vegetables are ideal), morning tea and lunch – plenty of food to fuel you! (Please leave lollies at home)
- A water bottle
- Appropriate clothing and a spare change of clothes
- A book bag
- A big smile and positive attitude! 😊

Please ensure all toys and valuables are kept at home.

Birthdays



We already have a birthday ritual in place so that your child has the opportunity to have their moment and be celebrated. Therefore, **please refrain from bringing in any lollies or treats to share**. We have food allergies in our class and need to keep our tamariki safe. Thank you for your understanding.



Staying Up-To-Date

For further information about our school and to keep up-to-date, please see our Facebook page or visit www.teaomarama.school.nz

HELPFUL INFO!

BYOD – Bring Your Own Devices / Ngā Rorohiko



Tūi Rua is a B.Y.O.D. (Bring Your Own Device) learning community. The use of technology is vital in our ever evolving world and we want to prepare our students with the technical skills they will need. The use of devices will be an integral part of our learning community and daily programme. If you are able to supply your child with a personal device (laptop, chromebook, iPad), we would really appreciate it.

These devices will continue to come to school and return home each day. We ask that chargers are left at home and that students charge their devices each night before bringing them to school.

Please ensure that if your child is using their device at home for play, that they are not using their school account. This is for their learning only!

Year 3 devices will continue to be provided and stored at school.



Home Learning

Our school does not set formal homework each week but we did share some ideas for how you can help at home in Term 1 (this was emailed to you).

Your child will have brought home readers and this will continue for the rest of the year. These **MUST** go home in a book bag. No book bag = no reader. We ask that your child's book bag comes to school daily so readers can be read both at home and school.

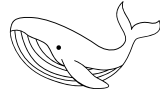
Children will be assigned work to complete on Google Classroom. This is for your child to complete in class time. We will inform your child if there is the odd time that they need to work on assignments at home. **Feel free to view the learning your child is doing in class via Google Classroom.**

You can get a really up to date insight into what your child is learning on this platform. Regular viewing of set work could be used to reinforce learning at home too.



OUR LEARNING

Term 3 Focuses



Tohorā – Chieftan of the Sea

This term, our main overarching inquiry focus will be around a story called, 'Tohorā – Chieftain of the Sea'. This story tells of our shared past in whaling and taking from the ocean without due consideration. Although this story is a tragedy, it ends with hope for the future. This story lends itself to a range of curriculum areas which we are excited to explore and provides a rich context to understand topical issues in our world.

Inquiry – Pākiki (Play Provocations)

For our Inquiry (Pākiki – Play Provocations), we will focus on Science, Social Science, PE and Health and Māori.

Science: We will explore the Planet Earth and Beyond, including the moon, stars, tides and the sea. This will lead into investigating pollution of the sea and its effects on te taiao (environment).

Social Science: We will explore early navigation of New Zealand settlers, as well as whaling and the impact this had on the marine life around Aotearoa. We will also be looking at rangatiratanga (leadership) and how this can be applied within our lives.

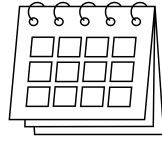
Te Ao Māori: As mentioned above we will look at settling in early Aotearoa, and the impacts of this during that time period. Term 3 will include Te Wiki o Te Reo Māori.

PE & Health: We will explore friendship and how we make and maintain friendships. We are also teaching a schoolwide unit called Keeping Ourselves Safe in Weeks 3-5. *More information will be shared closer to the time.*



WHAT'S ON?

Looking Ahead:



Term 3 Dates

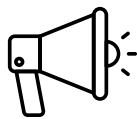


Date

What's On

Mon 14th July	First Day of Term 3 - Pōwhiri welcome for new families
Wed 30th July	Disco
Wed 13th August	Fun Run
18 - 22 August	Yellow Week & Daffodil Day
25th - 29th August	Book Fair
Wed 27th August	Nearest & Dearest Day
9-12 September	Ice Skating here at Te Ao Mārama!
15 - 19 September	Te Wiki o Te Reo Māori (Māori Language Week)
17 September	Board Elections
19 September	Last Day of Term 3
6 October	First Day of Term 4

Stay in Touch :



Ananiah House
ananiah@teaomarama.school.nz



Sarah Shearer
sarahs@teaomarama.school.nz



Sarah Corkill
sarah@teaomarama.school.nz



Te Ao Mārama
(07) 595 0595

"He aha te mea nui o te ao?

*What is the most important
thing in the world?*

*He tangata. he tangata. he
tangata."*

*It is the people,
it is the people,
it is the people.*

Maori Proverb

