

TERM 2, 2026

TŪĪ RUA NEWS

Welcome Back!

Kia ora e te whānau!

Welcome back to school. We hope you had some rest, relaxation and adventure with your tamariki over the break. We have a fun term ahead! Please take time to read through and note down events and dates. See you around school soon!

Sarah and Shan



*"Ko te manu e kai ana i te miro nōnā te ngahere.
ko te manu e kai ana i te mātauranga nōnā te ao."*

The bird that eats the Miro berry owns the forest, the bird that feasts on knowledge owns the world.

Term 2 Learning Focuses

Overarching Story for Term 2:

This term, our main overarching inquiry focus will be based around a story called, 'The Pedlar of Swaffham'. This is a traditional story that has themes stemming from it such as, generosity and giving back, listening to your inner voice and how happiness can be found in the little things right in front of us.

Inquiry - Pākiki (Topic Time):

Pākiki means 'to be curious or to inquire' and this is the name of our topic learning time in Tūi Rua. Pākiki covers learning areas such as Technology, Science and Social Science. Pākiki time empowers our students to manage their learning and fosters independence and self and time-management skills.

Social Science: We will explore olden day times versus now, delve into wants and needs, life skills as well as celebrating Pink Week (antibullying week).

Technology: We are going to learn about geocaching, how to use coordinates to find them and the technological design/build process.

PE & Health: For PE, we will practice large ball skills like throwing, catching and kicking. For Health, we will explore qualities like using our WITS, positive self talk, giving/receiving compliments, negotiating and making suggestions in a group.

Literacy: Our Reading and Writing will tie in with our topic and Term 2 theme. We will also write back to our Penpals in Chch!

Maths: We continue with Add/Sub Strategies, then Mult/Div as well as the strand area of Measurement (Mass/Volume) and Time.

Class Trip!

Exciting news! Next term we have booked a class trip to go to Clarence St Theatre to see the Show - Diary of a Wimpy Kid! Even more exciting, our very own Tūi Rua member, Cormac, is in the show!!

We are so looking forward to going to support him and to get out to see a cool show! More details will come early next term including permission forms etc. However we are signalling this now as we will require some parent helpers on the day - please save the date if you are keen and free. Note: we will only be able to take a set amount of parent helpers (due to limited capacity of seats and ratio) and we will send a request form out early next term. Feel free to speak to your child's Whānau teacher if needed around this.

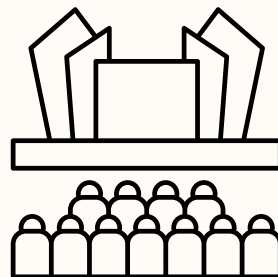
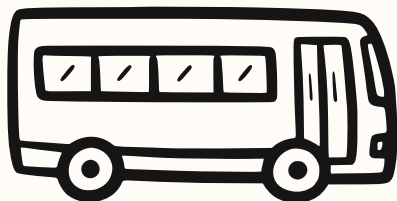
Details:

When: Thursday 14th May (Leave just after the 8.40am roll time for the 9.45am show. Depart 11.15ish - show runs for 1 hour).

Where: Clarence St Theatre, Hamilton

Cost: The cost will be loaded onto Kindo next term, but as an indication we are looking at approx \$22 per student (no cost to parent helpers).

How: We are going to travel by bus there and back. It is likely you might need to take your own car (or carpool with others) and meet us there depending on space on the bus.

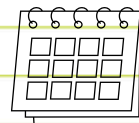


Dates to Diary!

Term 2



Date	What's On
Mon 20 April	First Day of Term 2 - Pōwhiri welcome for new families
Mon 27th April	Anzac Day observed / SCHOOL CLOSED
5th & 6th May	Hui-ā-whānau (Student/Parent/Teacher meetings)
Fri 8th May	Te Ao Mārama Has Talent Finals
11th May	Speak Up Friend Show - Yr3-6
Fri 15 May	Pink Shirt Day (Kindness/anti-bullying) / Wā Ngākau (Assembly)
Fri 29th May	Staff Only Day - SCHOOL CLOSED
Mon 1st June	King's Birthday Public Holiday - SCHOOL CLOSED
Fri 3rd July	Last Day of Term 2 / Wā Ngākau (Assembly)



Get in touch!



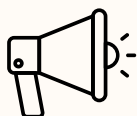
Sarah Corkill
sarah@teaomarama.school.nz



Shannon Millard
shannon@teaomarama.school.nz



Te Ao Mārama
07 595 0595



*He aha te mea nui o te ao?
What is the most important
thing in the world?*

*He tangata, he tangata, he
tangata.*

*It is the people,
it is the people,
it is the people.*

Maori Proverb

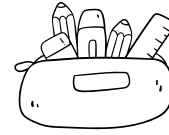


HELPFUL INFO!

Role of the Whānau Teacher



Your child has been placed within a Whānau Group for 2026. They will start each day with this kaiako and **this teacher is your main point of contact**. Please feel free to pop in and say hi before or after school but if you have any further queries that require more time, please book in a time with us. 😊



Stationery

UPDATE: If you ordered the stationery kit from our list from the start of the year and sent in ALL the spare pens, gluesticks etc, then it is likely your child has all they need at school. If not, please ask your child if they are running out of anything - **some need gluesticks and erasers. Please check in with your child so they are ready for learning on the first day back.** Please also encourage them in the mornings to come in and check their pencil case and sharpen any pencils if needed. This maximises use of learning time during the day.

Book Bags



Please ensure that your child **brings their book bag to school every day**. Literacy Workshops are happening each day, Monday to Thursday. Without a book bag, your child will not be able to take books home. **All readers will be collected on Fridays** and all book bags will be stored at school over the weekends. We will store book bags at school until we begin to use these (start approx Week 3).



Attendance

Just a reminder that children are welcome onsite in the morning from 8am - however this is unsupervised. They may wait outside the classroom and at 8.20am they are welcome inside. **School starts at 8.40am - please be here on time.** School finishes at 2.30pm and pick up needs to be prompt. Please give your child a clear plan or meeting point and encourage them to stay off the playground if they are unsupervised for their own safety. Ngā mihi

HELPFUL INFO!

BYOD – Bring Your Own Devices / Ngā Rorohiko



Tūi Rua is a B.Y.O.D. (Bring Your Own Device) learning community. The use of technology is vital in our ever evolving world and we want to prepare our students with the technical skills they will need. The use of devices will be a daily part of our learning community and programme. If you are able to supply your child with a personal device (laptop, chromebook, iPad), we would really appreciate it. Chromebooks are particularly user-friendly. These devices will come to school and return home each day.

We ask that chargers are left at home and that students charge their devices each night before bringing them to school. Please label your child's device with their first and last name clearly. B.Y.O.D. is optional (but recommended). Please speak to us if a device for your child isn't going to be possible as we have some school devices we can support you with, but this is limited.

We regularly spend time in class creating clear expectations around safe use of devices and the internet.

Please ensure that if your child is using their device at home for play, that they are not using their school account. This is for their learning only.

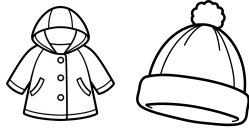


Home Learning

Our school does not set formal homework each week but we will share some ideas for how you can help at home when and if you want to. These will be shared later this term via Google Classroom – keep an eye out. Once Guided Reading is up and running, your child will start to bring home readers too (or sometimes a printed text on paper). Readers MUST go home in a book bag. No book bag, no reader. We ask that your child's book bag comes to school daily so readers can be read both at home and school. Once it is up and running, feel free to view the learning your child is doing in class via Google Classroom. This work is for your child to complete in class time but you can get a really up to date insight into what your child is learning on this platform. Regular viewing of set work could be used to reinforce learning at home too.

HELPFUL INFO!

Cooler Weather



It's a bit colder in the mornings now. Please ensure your child has appropriate clothing to keep warm. On rainy days, umbrellas are fine if they are using them to walk to/from school but they aren't to be used at break times and need to be stored by their bags for the day. A good idea is to keep a spare change of clothing/spare jumper in your child's bag in case they need it.



What to Bring to School

Please Bring Every Day:

- A lunch box packed with a healthy snack (fruits and vegetables are ideal), morning tea AND lunch - plenty of food to fuel you! (Please leave lollies at home).
- A water bottle
- Appropriate clothing - a hat and a spare change of clothes
- A book bag (every day!)
- A big smile and positive attitude!

Please ensure all toys, handbags and valuables are kept at home.

Birthdays



Encourage your child to share that it is their birthday with us as we love to celebrate them! We do already have a birthday ritual in place so that your child has the opportunity to have their moment and be celebrated. Therefore, **please refrain from bringing in any lollies or treats to share**. We have food allergies in our class and need to keep our tamariki safe. Thanks for your understanding.

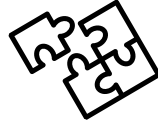
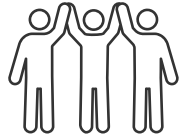


Staying Up-To-Date

For further information about our school and to keep up-to-date, please see our Facebook page or visit www.teaomarama.school.nz

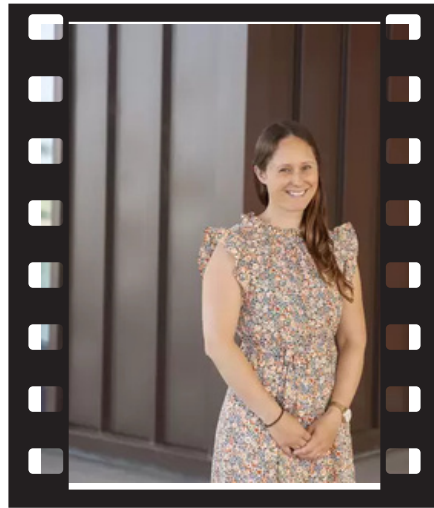
SUPPORT TEAM

Our Support Team



WHAEA LOU

Whaea Lou will be in Tūi Rua every second Monday to provide Shannon with release time being that she is a new kaiako. She will also be in every Friday for Sarah who looks after her 4yo on this day.



WHAEA DANIELLE

Whaea Danielle will be working in Tūi Rua every second Thursday with the Arts Team (doing fun art, drama, music, science etc).



WHAEA KYLA

Whaea Kyla will be working in Tūi Rua every second Thursday with the Arts Team (doing fun art, drama, music, science etc).



WHAEA HAYLEY

Whaea Hayley will be working as Literacy and Numeracy Support in our space.



WHAEA LUCY

Whaea Lucy will be working as Literacy and Numeracy Support in our space.



WHAEA BUFFY

Whaea Buffy will be working in our space each week supporting our children's learning of te reo māori.