



Tūī Tahi

TERM TWO



Welcome back tamariki ma!

We hope you all had a fantastic two-week break, filled with rest, fun, and maybe even a little adventure.

Now, it's time to jump back into learning with fresh energy and excitement! We've got an amazing term ahead, and we can't wait to see all the great things you'll accomplish.

Term 2 Focus:

This term in writing we are exploring The Magic Hat story. We will be continuing to write proper sentences, focus on spelling and adding detail to our stories through adjectives, alliteration and using our imagination to make the story our own.

We are continuing our Prime programme in numeracy and you can still expect to see a reader home every week.

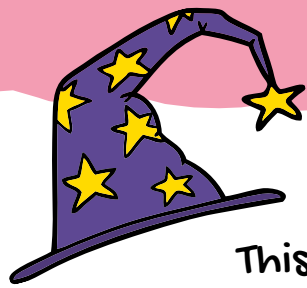
NO TOYS!

Please ensure your tamariki keep all toys, fidgets and special things at home!

We are noticing a lot of items from home coming in to school and are finding them to be a distraction as well as causing problems.



Thank you for your support with this decision!





Help from Home.

This term we are creating Magic hats in class. If you have any recycling or craft items spare at home to please bring them in. Items such as bottles, cardboard tubes/ boxes ect would be amazing.

 TERM 2 UPCOMING EVENTS 	
Date	What's On
Mon 28 April	First Day of Term 2 - Pōwhiri welcome for new families
Thurs 8 May	New Parent Evening
13 & 14 May	Hui-ā-whānau (Student/Parent/Teacher meetings)
Fri 16 May	Pink Shirt Day
Thurs 29 May	Te Ao Mārama Has Talent Finals
Fri 30 May	Staff Only Day - SCHOOL CLOSED <i>Community of Learning (all local schools closed)</i>
Mon 2 June	King's Birthday Public Holiday - SCHOOL CLOSED
2 - 6 June	Samoa Language Week - Vaiaso o le Gagana Samoa
Fri 20 June	Matariki Public Holiday - SCHOOL CLOSED
Fri 27th June	Last Day of Term 2

Whānau Time

Please join our morning whānau time 8:40-9:00 and afternoon whānau time 2:15-2:30.

We have an open door policy and encourage whānau engagement in this time. If you are ever wanting more of a discussion please do not hesitate to contact us to arrange a better time

If you would like to contact us please email us at:

ruby@teaomarama.school.nz
lucy@teaomarama.school.nz

